



The Evolving C-Suite

What's the most exciting thing about today's C-suite? The fact that it's changing. Companies' top brass are becoming more inclusive of diverse voices—and hence, **more effective**. "Two-thirds of women under 30 want to be senior leaders," says McKinsey senior partner **Alexis Krivkovich**. "That's incredibly exciting because today, only one in four members of the C-suite are women. And yet women under 30 look up and say, 'I want to be there at the top.'" Read more on these insights, what it means for the future of business and how you fit in, [here](#).

10% discount on your 2024 membership extended!

Use **CSWEET10** at checkout below.

We've extended our end-of-year membership drive and discount to the end of January, 2024!

Starting February 1, 2024, our annual membership fee will go up from \$495 to \$795 and our event prices for non-members will increase 25%.

So join now and save 10% on the annual membership fee of \$495 while it lasts.

As a C-Sweet member, you'll enjoy exclusive discounts, recognition for your professional achievements, and *a community that truly supports, empowers, and connects.*

Let's forge a future where we thrive together in the C-suite, creating a more equitable and inclusive world.

JOIN NOW

C-Sweet is growing! Join the C-Sweet Executive Committee!

We're looking for executive committee members in the following chapters: NY and the DC-Maryland-Virginia area.

As an executive committee member, you'll be involved in event planning, sponsorship, and membership growth. This is an outstanding opportunity to expand your professional circle and make an impactful change on a local and national level. Ideal candidates are those active in corporate sales or with connections to executive women across various sectors.

Ready to elevate women in leadership with us? Apply by submitting your resume and a personal statement explaining your interest in joining our executive committee to csweetexecs@gmail.com

Your privacy is paramount; all applications are treated with the utmost confidentiality.

A WARM WELCOME TO OUR NEW MEMBERS!



Irene David

Irene joins our NY chapter and is an accomplished Global Information Technology and Business Systems Executive with over 20 years of proven expertise in strategic technology innovation, product development & design and organizational transformation. Previous roles include SVP, Global PMO, Product Design & Quality Engineering Warner Music Group and Executive Director, Platform Delivery & Program Management at Ralph Lauren Digital.



Desy Majo

Desy joins our DMV chapter and is Chief Financial Officer - North America | Board of Director at Maccaferri. Her expertise spans a wide range of areas, including financial acumen, industrial and financial controlling, financial statements, business intelligence, FP&A processes, accounting, budgeting, IFRS, ITA, GAAP Procedures, financial sustainability, staff leadership, training, variance analysis, cost control, management, and cash-flow reporting.



Jennifer Kuziminski

Jennifer joins our Chicago chapter and is Partner at HMB Legal Counsel. She represents families with generational wealth, ultra-high net worth individuals, executives, business owners and entrepreneurs, helping clients transform their wants and needs into goals with a plan to achieve them. She advises clients on income, corporate, estate, gift and generating-skipping tax considerations, and helps business owners plan for the future of their companies.



Vanessa Sax

Vanessa joins our DMV chapter and is the Founder and Executive and Leadership Coach of Empowering Leadership Coaching (ELC). ELC was born out of her curiosity and belief that by drawing strength and appreciation from each generation's skills and values; together we can create a thriving, vibrant, future-focused workforce.



Dr. Anita Jack-Davies

Dr. Anita joins our NY chapter and is a Management Consultant: Culture & Operations (Global DEI Lead) at R/GA. She is a cross-cultural expert with twelve years of experience in the field of DEI, specializing in strategic planning, leadership development and organizational change management.



Crystal Calvo

Crystal joins our LA chapter and is Senior District Manager at ADP TotalSource.

 **Thank You to these Renewing Members!** 

**Catherine Bindewald
Aly Brooke
Gloria Burton
Robin Burton
Steve Cirvello
Karen Clark
Keesha Crosby
Damon D'Amore
Linda Duncombe
Debbie Fornum
Nicole Forsyth
Teresa Freeborn
Delores Gilmore
Farha-Joyce Haboucha
Gerri Hall
Iran Hopkins
Sue Hoyle
Grace Hussein
Mollie Kaiser
Bonnie Klemm
Jennifer Kuziminski
Veronica Lah**

**Kim Lipske
Karen Martin
Jennifer Mir
Molly Muir
Chioma Ndubuisi
Diana Palchik
Wendy Pomerantz
Allie Reid
Lauren Sapato**

**Amanda Schneider
Alan Seiden
Brannan Sirratt
Leslie Stackpole
Emily Tam
Veronica Vasquez
Serene Wang
LeeAnn Webster
Donna Wilson
Chris Wyckoff
Jacqueline Yu
Lori Zeibert**



Let's Celebrate!

New Chapter Launches

Southern Nevada: Jan. 25

Charlotte: Feb 1

San Francisco: Feb 25

Irvine Coming Soon!

Thank You

to the chapter committee
members for bringing C-Sweet
to life in these vibrant cities!





UPCOMING EVENTS



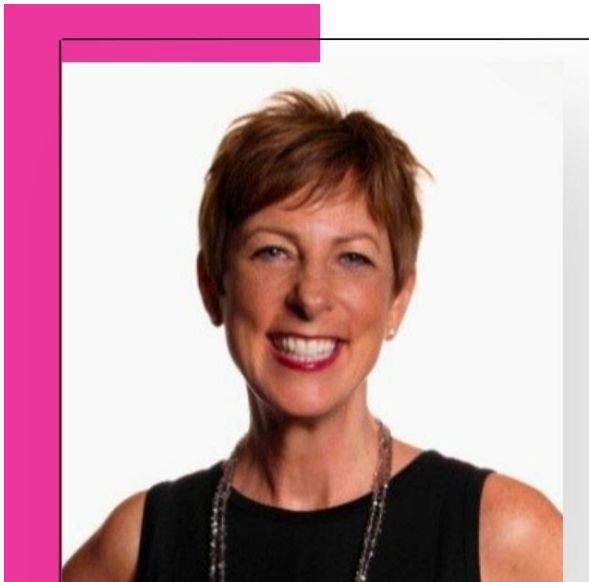
Women on Boards Roundtable

DEMYSTIFY THE BOARDROOM WITH HIM FOR HER

presented by Laura Gluhanich
Senior Director of Programs, Him for Her

Tuesday | January 16th
12:00 pm PT / 3:00 pm ET
Register Here: www.csweet.org/Events

[Register Here](#)



DMV CHAPTER SPONSORED

Empower Your Year with Goals You Care About

presented by Lindsay Satterfield
Productivity Trainer & Coach,
CEO, SATTERFIELD & COMPANY

Join us for a new approach to
goal-setting in 2024.
This event is open to ALL!

Thursday, January 18th
Noon ET / 9:00am PT
www.csweet.org/Events

[Register Here](#)



SOUTHERN NEVADA PREMIERE

**NAVIGATING A BRAVE
NEW ECONOMIC WORLD**

presented by Andrew Woods
Director, Center for Business and Economic Research
(CBER), University of Nevada

Thursday | January 25th
5:30 - 8:00 PM PT
at Chef's Roma Kitchen
1550 W Horizon Ridge Pkwy, Henderson, NV 89012
Register Here: www.csweet.org/Events

Sponsored by:

NUTANIX

**JUST
MEDICARE**

**UNCLE
NEAREST**
PREMIUM WHISKEY

[Register Here](#)



**CHARLOTTE CHAPTER LAUNCH
AND EXECUTIVE NETWORKING DINNER**

Thursday, February 1st
5:30 - 8:00 PM PT
Rooster's at Southpark
6601 Carnegie Blvd., Charlotte, NC 28211

Join us for an evening of connection, exquisite
flavors, and community building as we launch
the C-Sweet Charlotte Chapter!

This event is made possible by our sponsor,
SolveWise Consulting.



[Register Here](#)



HR Roundtable

How to Hire, Fire, and Not Get Sued! Tips for Protecting Your Business From Employment Lawsuits

with Diana Friedland, ESQ, Employment Attorney, Bernstein & Friedland, P.C.

TUESDAY | FEBRUARY 27TH
12:00 NOON PT / 3:00 PM ET
WWW.CSWEET.ORG/EVENTS



[Register Here](#)

In-Person Event

C-SWEET

SAN FRANCISCO SOIRÉE: SIP, SAVOR & NETWORK

Join us for an exclusive C-Sweet in-person gathering hosted by
The RealReal in San Francisco

With Speaker



Rati Sahi Levesque
President and COO
The RealReal

Thursday | February 29th | 5:00 - 7:30 PM PT
at The RealReal HQ
55 Francisco St Fl 6 (at Montgomery St)
San Francisco, CA 94124
Register Here: www.csweet.org/Events

Sponsored by:





[Register Here](#)

For more upcoming events, click [here](#).

Your support of RedRover will make a huge difference in the lives of animals and the people who love them.



Special Thanks to Our Sponsors



AMPLIFY PROFESSIONAL SERVICES
EXECUTIVE SEARCH AND IT CONSULTING

Not yet a member?

Explore membership [here](#).

Want to stay connected?

Join our [LinkedIn](#) and [Facebook](#) communities and follow our podcast on [Instagram](#).

[Unsubscribe](#)