



Why aren't more women leading U.S. companies?

New York, CNN —

Women have made huge strides in business, ascending to the C-suite and the boardroom in record numbers.

But they are still very far from achieving parity with men in securing top corporate jobs in the United States.

Women make up half the US population. But they only account for 10.6% of Fortune 500 chief executives, 30.4% of US board members and 32.8% of college and university presidents, according to the Pew Research Center. Pew decided to ask Americans why they think that is and whether they expect more women to occupy top business roles anytime soon. So they surveyed a nationally representative sampling of US adults.

In response to the question, "Why aren't there more women in top executive business positions?" respondents identified several "major" reasons.

Top among them:

- 58% said women have to do more to prove themselves than men.
- 50% cited gender discrimination.
- 48% noted family responsibilities made it harder for women to move up.
- 43% said many businesses aren't ready to hire women for top roles.
- 40% thought sexual harassment is creating a difficult environment for women to get ahead.

READ MORE



Did You Know?

The C-Sweet Career Center offers candidates premium services and solutions to create or improve your resume/CV's, cover letters, interview preparation skills and LinkedIn profiles tailored to your dream role.

C-Sweet Member Benefit: Executive Coaching

Executive coaching has emerged as a powerful and transformative tool for enhancing leadership effectiveness and professional growth. At C-Sweet, we want to support you in achieving your goals and having the career you've always wanted. That's why we created an **Executive Coaching Program** for C-Sweet members.

All members of C-Sweet receive a free discovery call with one of our 10 top-tier executive coaches and a 15% discount on coaching services, details to be determined between you and your coach. To take advantage of this amazing benefit, please email the **top three coaches** (their bios [here](#)) you would like to work with and we will assist you in scheduling your first session.

Email: csweetexecs@gmail.com



New Episode

Our latest podcast episode “Are You Burnt Out At Work?” features Beth and Dianne in conversation with Jamie Shapiro, executive leadership and wellbeing coach. They talk about burn out, corporate leadership, and authenticity in the workplace.

[LISTEN NOW](#) →

A WARM WELCOME TO OUR NEW MEMBERS!



“I feel like I’ve found the group I’ve been looking for. I’ve attended several events that have helped me a lot in terms of my career development. I know that being a member of C-Sweet will help me achieve my professional goals.”

-Jean Xiang

Senior VP, Director of Financial Risk Management, Pacific Premier Bank





Marina Chase

Mariana joins C-Sweet from beautiful Trinidad and Tobago. She's a financial consultant who oversees all global corporate risk, corporate development, and corporate financial functions, including treasury, accounting, financial planning, strategic planning, investor relations, and purchasing.



Bonnie Klemm

Bonnie joins our national chapter and is a certified hypnotherapist and author of the forthcoming book, "That's Not Me! I'm Not a Procrastinator!"

A SPECIAL THANK YOU TO OUR RENEWING MEMBERS



Teresa Freeborn

Author, Speaker, Executive
and Thought Leader



Mollie Kaiser

Private Wealth Advisor
Strategic View Advisors

**Many thanks to our Charlotte Committee Members
for their time and dedication to C-Sweet!**



Jessica Meilike
Director
Sterling Capital Management



LaKeeshia Fox
Associate Director of Strategy
Living Cities



Sharonica Smedley
Signature Events Director
AdMedia



Tara Schultz
Founder, Principal Consultant
SolveWise, LLC



Opportunities to Give Back

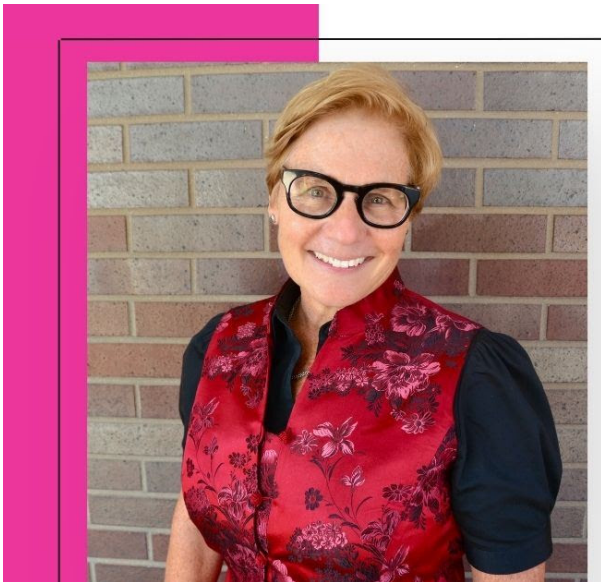
C-Sweet partners with nonprofits to provide them with additional exposure and support in their mission to make the world a better place for all. This month, we're highlighting Earth Rangers, a kids' conservation organization, committed to instilling environmental knowledge, positivity, and the confidence to take action in every child in Canada and now the United States. We do this through a suite of programming that children can participate in at school, at home, and in their communities.

All of these programs are educational and engaging – but more importantly, they show children that it's not too late to help the planet, and the things we do today will matter tomorrow. Programs are delivered via an elementary school assembly program, the Earth Rangers App member platform, the Earth Rangers Podcast, and our educator hub, Earth Rangers Homeroom.

To learn more or make a donation, please visit this [link](#).



UPCOMING EVENTS



C-SWEET BUSINESS ROUNDTABLE

Driving Constructive Dialogue in Difficult Times

presented by Karen Browne
Chief Executive Officer at
One Off Hospitality Group

This event is open to ALL!

Thursday, October 5th
7:30 am PT / 10:30 am ET
www.csweet.org/Events

[Register Here](#)

Jump Forward Forum

Change! Love it or hate it?

Join C-Sweet for a highly interactive monthly session facilitated by Dr. Bonnie Wims, Counseling Psychologist

Wednesday, October 11th
12:00 PM PT / 3:00 PM ET
Register Here: www.csweet.org/Events

Meet the Speaker



Dr. Bonnie Wims
Counseling Psychologist,
Founder & CEO,
Wims and Associates



[Register Here](#)

In-person Event

CSWEET CHICAGO CHAPTER

***Champagne & Couture:
An evening with Fashion Designer
Maria Pinto***

Meet Maria and learn about her iconic journey.
Enjoy appetizers and champagne
from Kobrand Wine & Spirits.

Thursday | October 12th
4:30 - 7:00 PM CT
Maria Pinto
710 N Wabash Ave, Chicago, IL 60611
www.csweet.org/Events



[Register Here](#)

CSWEET

Women on Boards Roundtable

**Shaping Tomorrow's
Boards: Fireside
Insights with
Suzanne Brown of
NYSE**

Tuesday | October 17th
12:00 pm PT / 3:00 pm ET
www.csweet.org/Events



Suzanne Brown
Senior Program Manager
NYSE ESG Initiatives



Michele Ashby
Principal
Ashby Consulting Enterprises
LLC

[Register Here](#)



NATIONAL SPEAKERS SERIES

Web3 and Blockchain Mastery: A Corporate Executive's Guide

presented by Professor Tonya M. Evans
Professor of Law at Dickinson Law | CEO of
Advantage Evans, LLC

A complimentary event, open to all.

Thursday | October 19th
3:00 pm ET / 12:00 noon PT
www.csweet.org/Events



[Register Here](#)



Charlotte Chapter Debut: Networking Mixer

Enjoy fabulous conversation, delectable appetizers,
fine wines, refreshing soft drinks, and a chance to
win exciting prizes in our fun raffle!

Key Sponsor:



SOLVEWISE

TUESDAY | OCTOBER 24TH
6:00 - 8:00 PM ET

PINHOUSE

2306 CENTRAL AVENUE, CHARLOTTE, NC 28205
WWW.CSWEET.ORG

[Register Here](#)

In-person Event

CSWEET

DMV Chapter

Generations in the Workplace: Women Transcending Age program & Wine Tasting

Hosted By: **PAUL HASTINGS** Sponsored by: **BOISSET Collection** **OCEAN PRIME**

Join us for an inspiring evening of conversation, connection, and exploration on how women are transcending age boundaries and sexism in the form of ageism - professionally and personally.

Thursday, October 26th
5:30 - 7:30 pm ET
Paul Hastings, 2050 M St NW, Washington, DC 20036
Register Here: www.csweet.org/Events

Tara K. Giunta
 Partner
 Paul Hastings LLP

Gerri Mason Hall
 Equity Strategist, C-Suite and HR Executive Advisor,
 Generations United Representative

Valentia Royal
 VP HR & Admin at PBS Distribution,
 DEI Professional at HelpAge USA Representative

Marta Hill Gray
 Executive Director at Culpepper Garden and President at Gray Matter Group

[Register Here](#)

For more upcoming events, click [here](#).

Your support of RedRover will make a huge difference in the lives of animals and the people who love them.



Special Thanks to Our Sponsors



Not yet a member?

Explore membership [here](#).

Want to stay connected?

Join our [LinkedIn](#) and [Facebook](#) communities and follow our podcast on [Instagram](#).