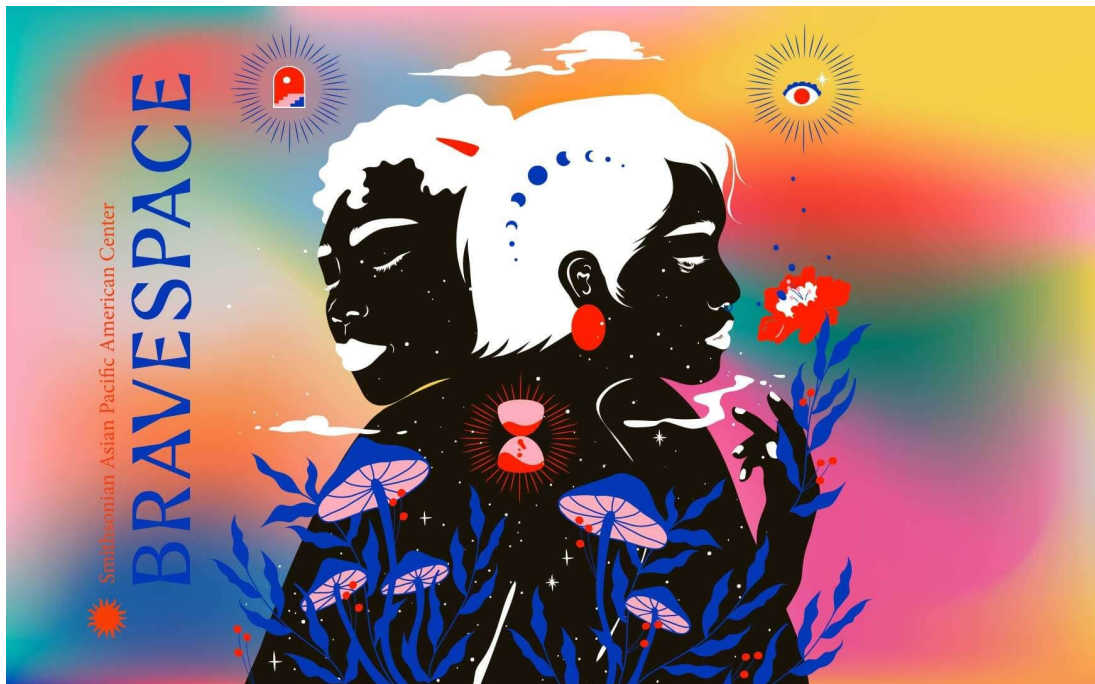




## Asian Pacific American Heritage Month



This month we honor generations of Asian Pacific Islanders who have enriched our history. The Smithsonian Asian Pacific American Center pays tribute with a compilation of original songs, sounds and meditations created by Asian-American women and non-binary artists and musicians. Listen [here](#).

Our *latest podcast episode* features our conversation with [Mimi Donaldson](#), discussing her career, TED Talks, and her outstanding public speaking tips. Mimi coaches individuals and sales staffs in creating and delivering their perfect marketing pitch. For over 20 years she's captivated audiences and won acclaim for her rousing keynote speeches, compelling workshops and in-house training programs.



“

“It’s good to be connected with other leaders, especially women, who are likely to be open about sharing experiences. I feel like I joined a close-knit community and that’s important.”

-Lisa Temple



Lisa joined our C-Sweet’s NYC chapter a year ago and just renewed her membership. She’s an attorney and founder of [Temple Law](#) which specializes in business law. The Firm offers services in intellectual property, commercial transactions and corporate law, including mergers and acquisitions, and serves as general counsel for hire. She lives in Connecticut with her husband, three daughters, father and three dogs. Lisa’s open to receiving inquiries regarding business law questions or raising teenagers.

The best way to reach her is via email at [lisa@temple-law.com](mailto:lisa@temple-law.com).

## A Warm Welcome to Our New Members!

### **AMY WHITE**

AMY IS VICE PRESIDENT AND BUSINESS FOCUSED TECHNOLOGY LEADER AT VEDA DATA, WITH A PROVEN TRACK RECORD OF IMPLEMENTING HIGH-VALUE BUSINESS TECHNOLOGY SOLUTIONS ACROSS INDUSTRIES.



### **JENNIFER MILLARD**

JENNIFER IS MANAGING DIRECTOR AT MANATT, PHELPS & PHILLIPS WHERE SHE ASSISTS ENTERPRISES AND INVESTORS THROUGH INORGANIC STRATEGY AND EXECUTION IN ALIGNMENT WITH THEIR DIGITAL THESIS.



### **ANGELICA MARTINEZ**

ANGELICA MARTINEZ SERVIGNA IS AN UNDERGRADUATE STUDENT IN THE RITA & BURTON GOLDBERG DEPARTMENT OF DRAMATIC WRITING AT NYU TISCH SCHOOL OF THE ARTS WITH A MINOR IN PERFORMANCE STUDIES, UNDER TISCH DEAN'S SCHOLARS SCHOLARSHIP AND TALENT IDENTIFICATION AWARD.



**Don't miss this exciting event!**



## **Federal Reserve 101**

WITH

**QIANA CHARLES**

VICE PRESIDENT AND REGIONAL EXECUTIVE AT  
FEDERAL RESERVE BANK OF SAN FRANCISCO

Thursday, May 18  
12:00 PM PST/ 3:00 PM EST  
Register here: [www.csweet.org/Events](http://www.csweet.org/Events)



---

**Congratulations to C-Sweet member, Kim Davis who completed her ACE Board Certification Training!**

“

"I'm happy to report that I just completed the exam and passed!  
Thanks to other C-Sweet members in the program for their support along the way!"  
-Kim Davis





Congratulations to one of our founding C-Sweet members, [Wendy Pomerantz](#) and her company, [Bertha Mae's Brownie Co.](#) for winning the Best of Los Angeles Award for Best Brownie.



[SHOP NOW](#)

---

# Upcoming Events

## ***CEO Roundtable***

**Tuesday, May 9th, 12:00 PM PST/ 03:00 PM EST**

If you are a CEO or President in a middle-market or fast growth company, you will want to attend this insightful, strategic and tactical program. This year we continue the 10X Your Business program, as well as bring in outstanding facilitators to address key issues for CEOs.

[Register Here](#)

## ***May Jump Forward Forum with Dr. Bonnie Wims***

**Wednesday, May 10th, 12:00 PM PST/ 3:00 PM EST**

Topic: Setting Healthy Boundaries

Ever notice how you can set healthy boundaries in some areas of your life, yet struggle to draw the line in others? Let's find out what mental barriers prevent you from respecting your own time first.

[Register Here](#)

## ***Federal Reserve 101 with Qiana Charles, VP and Regional Executive for Federal Reserve SF***

**Thursday, May 18th, 12 PM PST / 3 PM EST**

We invite you to participate in a virtual meeting and presentation by Qiana Charles, Vice President and Regional Executive with the San Francisco Fed, to learn more about the organization and it supports the American People and the economy.

[Register Here](#)

## ***June C-Sweet Business Roundtable***

**Thursday, June 1st, 7:30 AM PST/ 10:30 AM EST**

Ready for a summer beauty refresh? Join us as Arielle Ross, Founder of Relevation Beauty, shows us how to use neutral colors in a polished and professional way.

[Register Here](#)

## ***NY Executive Evening Event***

**Tuesday, June 6th, 5:30 - 8:30 PM EST**

**The Chrysler Building, 405 Lexington Ave, New York, NY 10174**

Cocktail Networking Reception and Panel Discussion on "Hot Button Issues in Capital Raising for Tech and Entertainment".

[Register Here](#)

## C-Sweet Chicago Executive Networking Event

Hosted by Nuveen

Thursday, June 8th, 5:00 - 7:00 PM CST

Nuveen Office 333 W Wacker Dr, Chicago, IL 60606

Celebrate Juneteenth with a fireside chat and executive networking featuring appetizers, beverages and an Uncle Nearest Premium Whiskey Tasting.

[Register Here](#)

For more upcoming events, click here.

[Upcoming Events](#)

---

Your support of RedRover will make a huge difference in the lives of animals and the people who love them.



## Special Thanks to Our Sponsors



---

### Want to stay connected?

Join our [LinkedIn](#) and [Facebook](#) communities and follow our podcast on [Instagram](#).

---

[Unsubscribe](#)