

C-Sweet News & Upcoming Events...

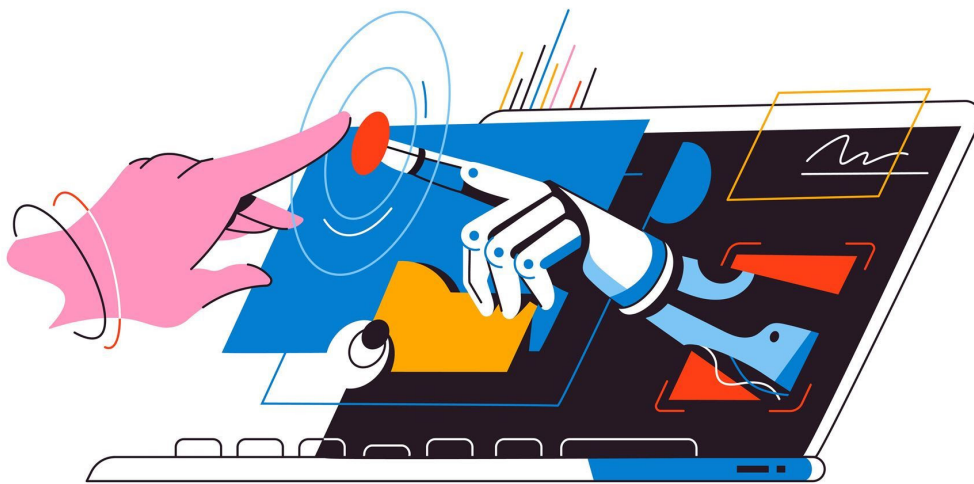
1 message

C-Sweet <admin@csweet.org>
Reply-To: "Us, Contact" <csweetexecs@gmail.com>
To: K B <KB@csweet.org>

Tue, Aug 15, 2023 at 12:13 PM



A.I. and the Automation of Work



ChatGPT and generative AI will change how we work, but how different is this to all the other waves of automation of the last 200 years? What does it mean for employment? Disruption? This [article](#) by Benedict Evans, tech analyst, takes a deep dive and explanation of what we could expect in this emerging world of work.



Launching this month! C-Sweet Executive Coaching

- Featuring 10 top-tier coaching experts working exclusively with C-Sweet.
- Special rates for C-Sweet members.
- Upcoming "Coaching Town Hall" featuring our panel of exclusive coaches, available to all members, offered every quarter via zoom.

Not a member of C-Sweet yet?

Join now and receive a complimentary, 30-minute coaching session with a coach of your choice!

Watch your inbox for more information coming soon!

Questions? Ready to join C-Sweet?

Contact: Dianne Gubin at Dianne@csweet.org



New Episode

Our latest podcast episode, "Corporate America to Start Your Own Business," features Beth and Dianne in conversation with Pamela Slim, an award winning author, speaker and small business strategist who works with thought leaders to scale their impact. She talks about helping BIPOC business owners develop their platforms, replacing harmful corporate structures and finding the purpose of work in the new world of work.

LISTEN NOW

Check companies advertising jobs on **C-Sweet Career Center** against your LinkedIn contacts. Leverage professional connections for more information about the company or request a referral.

[SEARCH NOW](#)



Looking to move up in your career? In addition to executive coaching, and executive search, C-Sweet also has a **career center** where you can look for and apply to the latest jobs.

**Shout-Out to LA Committee Members for
their time and dedication to C-Sweet!**



Carolyn A. Sims
Co-Lead Senior Manager,
Community and Climate Equity,
Southern California Edison



Georgia Zachary
Co-Lead Executive Care and
Advocacy, AT&T Services, Inc.



Barbara Oberman
President & CEO, Barbara C.
Oberman Insurance



Iris Hosea
Co-Founder of Festively



Lois Ungar
CFO
SBL Venture Capital, LLC



Melinda Chelliah
President & Founder
Tailored for Growth



Michelle Landrum
GBDS, CEBS Employee
Benefits Consultant



Susan Tweedy
Partner, Director of Consulting
Services CGI

A WARM WELCOME TO OUR NEW MEMBERS!

JENIFER GRANT

JENIFER JOINS OUR NEW YORK CHAPTER AND IS EXCITED TO BE A RESOURCE FOR THE C-SWEET COMMUNITY AND TO PREPARE FOR CORPORATE BOARD CERTIFICATION. SHE IS A SENIOR BUSINESS STRATEGY AND CORPORATE FINANCIAL STRATEGY EXECUTIVE ADVISING C-LEVEL EXECUTIVES AND ENTREPRENEURS ON BUSINESS MODELING, GROWTH AND CAPITAL FORMATION STRATEGY, FINANCIAL FORECASTING AND VALUATION, AND INVESTMENT PREPARATION INCLUDING BUSINESS PLANS, FORECASTS, PITCH DECKS, AND VALUATIONS. JENIFER HAS A WALL STREET BACKGROUND IN RESEARCH, TECHNOLOGY STRATEGY, MERCHANT BANKING, FINANCIAL STRUCTURING, AND DERIVATIVE PRODUCTS.



IRINA MELKUMYAN

IRINA JOINS OUR L.A. CHAPTER. SHE IS VICE PRESIDENT, ERG PROGRAM MANAGER AT CITY NATIONAL BANK.



KAWAL (KAVI) KAUR

KAUL (KAVI) JOINS US IN THE L.A. CHAPTER. SHE IS A PROGRAM MANAGER AND BUSINESS OPERATIONS MANAGER AT JP MORGAN CHASE.



ZHENNI JACKSON

ZENNI JOINS C-SWEET IN THE CHICAGO CHAPTER. SHE IS VICE PRESIDENT OF SALES AT AYR.



Upcoming C-SWEET EVENTS



C-Sweet Women on Boards Roundtable

FINDING YOUR SWEET SPOT: MANAGING YOUR PERSONAL BRAND

presented by Heather H. Bennett
Partner, Newport LLC | Board Director | Author

Tuesday | August 15th
12:00 pm PT / 3:00 pm ET
Register Here: www.csweet.org/Events

[Register Here](#)

C-SWEET

National Virtual Event

How Safe Is Your Money? Economic Outlook for 2023

A complimentary event, open to all.

Thursday | August 17th
12:00 pm PT / 3:00 pm ET
www.csweet.org/Events

Linda Duncombe
EVP, Chief Marketing, Data and Digital Officer at City National Bank

Karen A. Clark
SVP, Inclusion Strategies & Bus. Dev. at City National Bank, CEO of TheKarenA

[Register Here](#)

C-SWEET

CHICAGO NETWORKING POP-UP HAPPY HOUR EVENT

THURSDAY, AUGUST 17TH
4:30 - 6:30 PM CT
AT

CITY WINERY RIVERWALK WINE GARDEN
11 W. RIVERWALK SOUTH, CHICAGO, IL 60601

Come to a relaxed and informal outdoor evening. Meet and connect with the Chicago Committee, and fellow C-Sweet Members. Bring your colleagues and friends. Help expand the network!

Non-hosted event. Dress Summer Casual.

[Register Here](#)



C-SWEET BUSINESS ROUNDTABLE

**Mastering Retirement:
Navigating the Two Phases
for Financial Success**

presented by Mollie Kaiser
Private Wealth Advisor at
Strategic View Advisors

Thursday, September 7th
7:30 am PT / 10:30 am ET
www.csweet.org/Events

[Register Here](#)

Jump Forward Forum

Grief and Loss - How long should we experience the symptoms of grief?

Join C-Sweet for a highly interactive monthly session
facilitated by Dr. Bonnie Wims, Counseling Psychologist

Wednesday, September 13th
12:00 PM PT / 3:00 PM ET
Register Here: www.csweet.org/Events

Meet the Speaker



Dr. Bonnie Wims
Counseling Psychologist,
Founder & CEO,
Wims and Associates

[Register Here](#)

For more upcoming events, click here.

[Upcoming Events](#)

Your support of RedRover will make a huge difference in the lives of animals and the people who love them.



Special Thanks to Our Sponsors



.....

Want to stay connected?

Join our [LinkedIn](#) and [Facebook](#) communities and follow our podcast on [Instagram](#).

.....

[Unsubscribe](#)