



Juneteenth Freedom Day

JUNE 19

Juneteenth is just around the corner. To help you celebrate, we are sharing ***this article*** from the Harvard Business Review that outlines thoughtful ways to acknowledge and celebrate this American holiday at your organization.

Our *latest podcast episode*: “Crypto Is Driving the Engine of the Future Economy”, features Beth and Dianne in conversation with **Dr. Tonya M. Evans** for her take on digital assets and how to engage with the crypto economy safely. A professor at Penn State Dickinson Law School, Tonya considers herself a crypto realist and discusses the important role of crypto in under-banked communities. She also “right-sizes” some overblown concerns about this issue.



Our sincere gratitude to Uncle Nearest, our newest Corporate Sponsor!

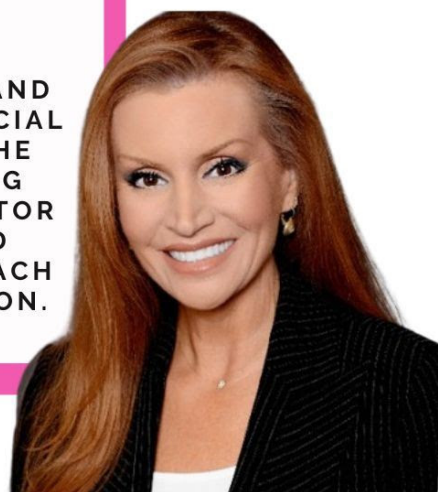


Uncle Nearest is an award winning whiskey maker, owned and operated by a female and minority executive team. This photo features Master Blender, Victoria Eady Butler of Uncle Nearest as well as C-Sweet LA Committee Members. Read more about Victoria Eady Butler and Uncle Nearest [here](#).

A Warm Welcome to Our New Members!

KELLIE HARDICK

KELLIE JOINS OUR LA CHAPTER AND IS THE SR. LEAD RM-VP, COMMERCIAL BANKING GROUP AT BANK OF THE WEST. SHE IS A HIGH ACHIEVING EXECUTIVE IN THE BANKING SECTOR WITH AWARDS AND IS AN AVID SAILOR AND COACH AT LONG BEACH YACHT CLUB SAILING FOUNDATION.



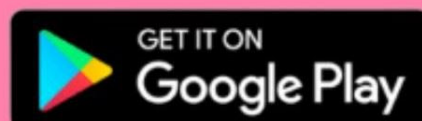
JESSICA MEILIKE

JESSICA JOINS OUR CHARLOTTE CHAPTER AND IS DIRECTOR AT STERLING CAPITAL MANAGEMENT. SHE IS A HIGHLY SKILLED, RESULT-ORIENTED FINANCE PROFESSIONAL WITH OVER SEVERAL YEARS OF EXPERIENCE INCLUDING SEVERAL YEARS OF MANAGERIAL AND SUPERVISORY EXPERIENCE.



NEW! C-Sweet Membership on the Go!

Download the C-Sweet app on your phone, found under "Personify Wild Apricot" so you can take C-Sweet wherever you go! Use your C-Sweet credentials to login, access the member directory and register for events.



For detailed instructions using the Wild Apricot for members app
(iOS)

[LEARN MORE](#)

For detailed instructions using the Wild Apricot for members app (Android)

[LEARN MORE](#)

Shout-Out to NY Committee Members for their time and dedication to C-Sweet!



Maria Malavenda

Managing Partner
KOL Ventures



Ruth Jin

Partner & Leader of Investment
Funds Practice, Moses Singer



Sandy Pelland

CEO and Founder
MomLifeTV



Monique Di Salvo

Client Account Leader
Accenture

Calling All Coaches!

At C-Sweet, we have dedicated ourselves to supporting individuals in achieving their career aspirations and maximizing their potential. We understand the critical role that executive career coaches play in empowering professionals to navigate their professional journeys effectively. By assembling a select group of highly skilled coaches, we aim to provide our members with a diverse range of expertise and perspectives to cater to their unique needs and aspirations.

If you're an executive coach interested in growing your business and serving our community, we strongly encourage you to apply.

Please contact Dianne@CSweet.org by June 30, 2023. If you have any questions or require further information, please do not hesitate to contact Dianne Gubin directly at 818-642-6188 or via email.





Tenerel Cellars is a mission-driven wine producer, founded, built and led by women. They are also a C-Sweet Ambassador! Members and friends of C-Sweet can enjoy 10% off using code **CSWEET10** when shopping online.

Upcoming Events



C-Sweet Chicago Executive Networking Event

Celebrate Juneteenth with a Fireside Chat:
Finance, Real Estate, Compliance and more...

What's the business outlook for YOUR industry for the rest of 2023 and beyond?

Cocktail Networking Reception and Uncle Nearest Premium Whiskey Tasting!

Thursday, June 8th
5:00 PM - 7:00 PM CDT
Nuveen Office, 333 W Wacker Dr., Chicago, IL 60606
Register Here: www.csweet.org/Events

Hosted By:

nuveen
A TIAA Company

Sponsored By:

manatt

UNCLE NEAREST
PREMIUM WHISKEY

Meet the Speakers



Grace Winters
Real Estate Partner
Manatt



Tara Giuliano
Chief Marketing Officer
Nuveen

Register Here

Jump Forward Forum

Use Anxiety as a Roadmap to Happiness

Join C-Sweet for a highly interactive monthly session facilitated by Dr. Bonnie Wims, Counseling Psychologist

Wednesday, June 14th
12:00 PM PST / 3:00 PM EST
Register Here: www.csweet.org/Events

Meet the Speaker



Dr. Bonnie Wims
Counseling Psychologist,
Founder & CEO,
Wims and Associates



[Register Here](#)



C-Sweet NY Executive Evening

Panel Discussion: Hot Button Issues in Capital Raising for Your Company



Jay Heller
Head of Capital Markets
Nasdaq, Inc.



Ruth Jin
Partner and Leader of
Investment Funds Practice
Moses Singer



Ram Ahluwalia
CEO & Co-Founder
Lumida Wealth



Elizabeth Corradino
Partner and Chair of Entertainment
and Intellectual Property Practice
Moses Singer



Dianne Gubin
Co-CEO, C-Sweet
Principal, Capital InVentures, Inc.
and President, AmplifyPS
Professional Services, Inc.

Cocktail Networking Reception - Business Attire!

Wednesday, June 14th
5:30 PM - 8:30 PM ET
Moses Singer, The Chrysler Building
405 Lexington Ave, New York, NY 10174
Register Here: www.csweet.org/Events

Hosted By: **MOSES SINGER**

[Register Here](#)



C-Sweet National Virtual Event

ALLYSHIP, THE NEXT STEP IN DEI

A complimentary event, open to all. Organized by the C-Sweet DMV - District of Columbia, Maryland and Virginia.

TUESDAY, JUNE 15TH
1:00 PM EST / 10:00 AM PST
WWW.CSWEET.ORG/EVENTS

Featuring



RENEE MACKLIN
EXECUTIVE PARTNER AT GARTNER
MANAGEMENT CONSULTING

The views and opinions expressed by the speakers are their own and may not necessarily reflect those of Gartner Management Consulting.

[Register Here](#)

Understanding The Corporate Sustainability Due Diligence Directive (“CSDDD”)

at C-Sweet's Women on Boards Roundtable

Tuesday, June 20th
12:00 PM PST/ 3:00 PM EST
Register Here: www.csweet.org/Events



Featuring:
Tara Giunta
Partner, Co-Chair, ESG
And Human Rights Practice
at Paul Hastings LLP.



[Register Here](#)

For more upcoming events, [click here.](#)

[Upcoming Events](#)

Your support of RedRover will make a huge difference in the lives of animals and the people who love them.



Special Thanks to Our Sponsors



Want to stay connected?

Join our [LinkedIn](#) and [Facebook](#) communities and follow our podcast on [Instagram](#).

[Unsubscribe](#)